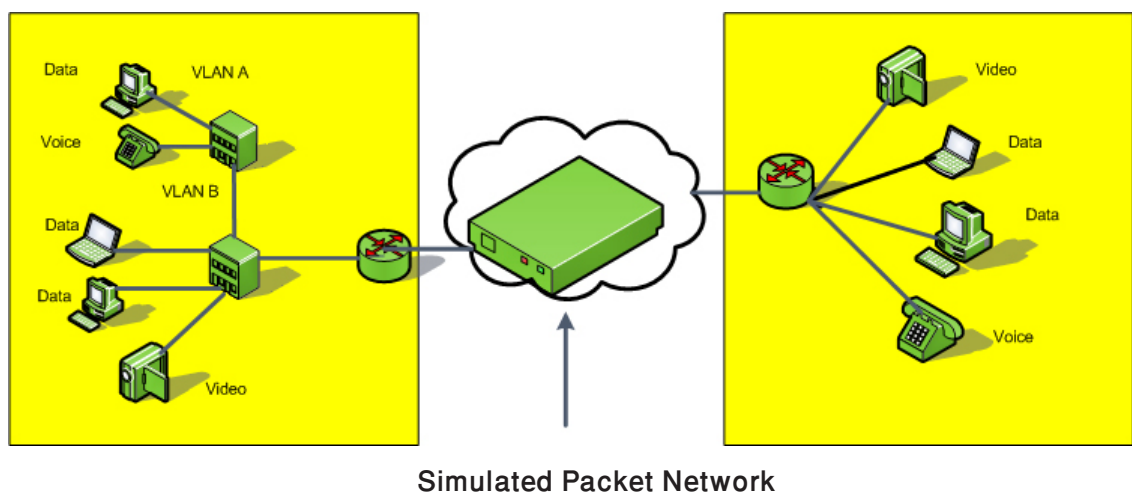


## WANSIM(WAN Simulation Solution)

Many distributed (client-server) applications were originally designed to operate in a Local Area Network environment. Nowadays this same software is often being deployed in a Wide Area Network. However, the longer latencies may have a serious impact on the performance of certain applications. WANSIM can provide a WAN simulation program which enables client-server application providers to investigate their software's performance characteristics without actually setting up a WAN system.



### Who should use WANSIM ?

IT network professionals are able to perform pre-deployment testing such as:

- ERP, E-Commerce
- Storage, Disaster Recovery
- VoIP Deployment, Video Conferencing
- Datacenter Consolidation
- Wireless/Cellular Testing
- Satellite Network Testing
- WAN Optimization,...